

CO3000

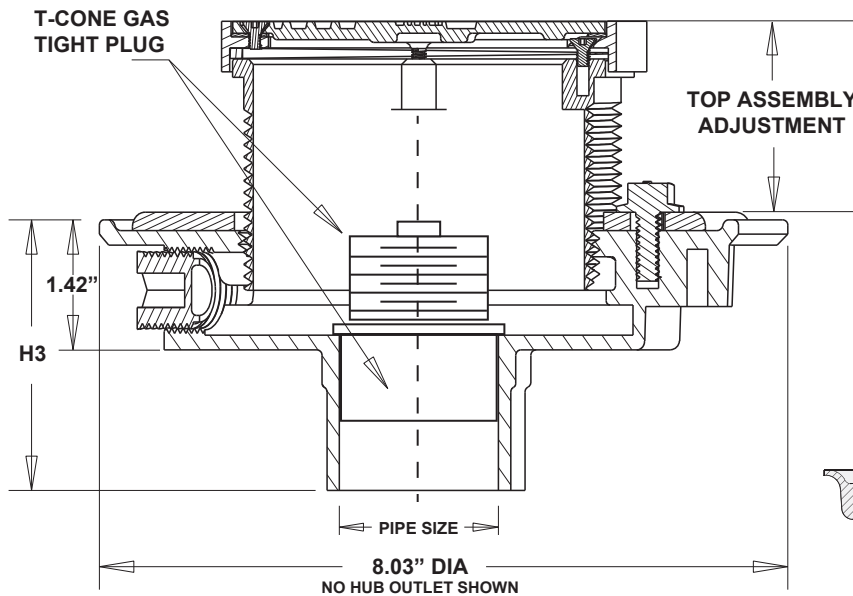
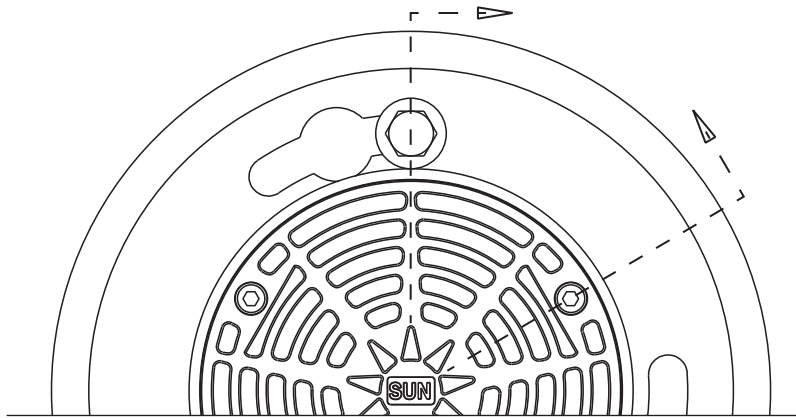
**FLOOR CLEANOUT WITH
ADJUSTABLE ROUND
HEAVY DUTY DUCTILE
IRON TOP**

LOCATION:

Specification & Function

Specification: SUN® CO3000 Series Adjustable Floor Cleanout with cast iron body, anchor flange, T-Cone gasket seal, combined solid heavy duty ductile iron cover with vandal proof screws.

Function: Used in finished and unfinished floors to provide access to plumbing lines for removal blockages.



Pipe Size

SUFFIX	DESCRIPTION
<input type="checkbox"/> 2	2" (51) Pipe Size
<input type="checkbox"/> 3	3" (76) Pipe Size
<input type="checkbox"/> 4*	4" (100) Pipe Size

Outlet Type

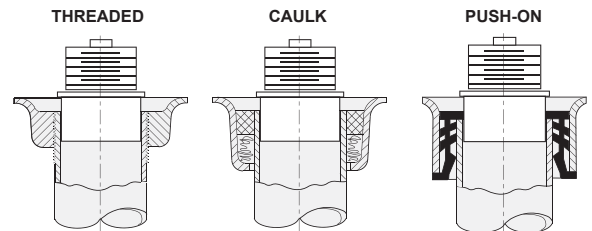
SUFFIX	DESCRIPTION
<input type="checkbox"/> IC	Inside Caulk
<input type="checkbox"/> NH	No Hub
<input type="checkbox"/> PO	Push On
<input type="checkbox"/> TH	Threaded Outlet

Options

SUFFIX	OPTIONAL VARIATIONS
<input type="checkbox"/> -1	Nickel Bronze Top Assembly
<input type="checkbox"/> -SS	Stainless Steel Top Assembly
<input type="checkbox"/> -1-S	Square Nickel Bronze Top Assembly*
<input type="checkbox"/> -AR	Acid Resistant Epoxy Coated
<input type="checkbox"/> -G	Galvanized Cast Iron
<input type="checkbox"/> -1-XHD	Extra Heavy Duty Nickel Bronze Top Assembly
<input type="checkbox"/> -P	Secondary Closure Plug
<input type="checkbox"/> -U	Extension

* See CO3004-IC Submittal for 4" (100) specifications.

Supplied Standard with Heavy Duty Ductile Iron Top unless otherwise specified



T-CONE PLUG INSTALLTION

Top Adjustment	
MIN.	MAX
1.66	2.51

ANSI load class -
LD = Light Duty (< 2000 LBS)
HD = HeavyDuty (5000 - 7499 LBS)
XHD = Extra HeavyDuty (7500 - 10000 LBS)

Pipe Size	BODY HEIGHT (H3)			
	Inside Caulk	No Hub	Push On	Threaded
2"	3.9	3.0	3.0	2.5
3"	3.9	3.0	3.0	2.5
4"	3.9	3.0	3.0	2.5

PROJECT:

CONTRACTOR:
